



# VIVOTEK IB639 Essential Bullet IP Camara Installation Guide

[Home](#) » [Vivotek](#) » VIVOTEK IB639 Essential Bullet IP Camara Installation Guide 

## Contents

- [1 VIVOTEK IB639 Essential Bullet IP Camara](#)
- [2 Product Information](#)
- [3 Package Contents](#)
- [4 Usage Instructions](#)
- [5 Warning Before Installation](#)
- [6 Hardware Installation](#)
- [7 Documents / Resources](#)
  - [7.1 References](#)



**VIVOTEK IB639 Essential Bullet IP Camara**

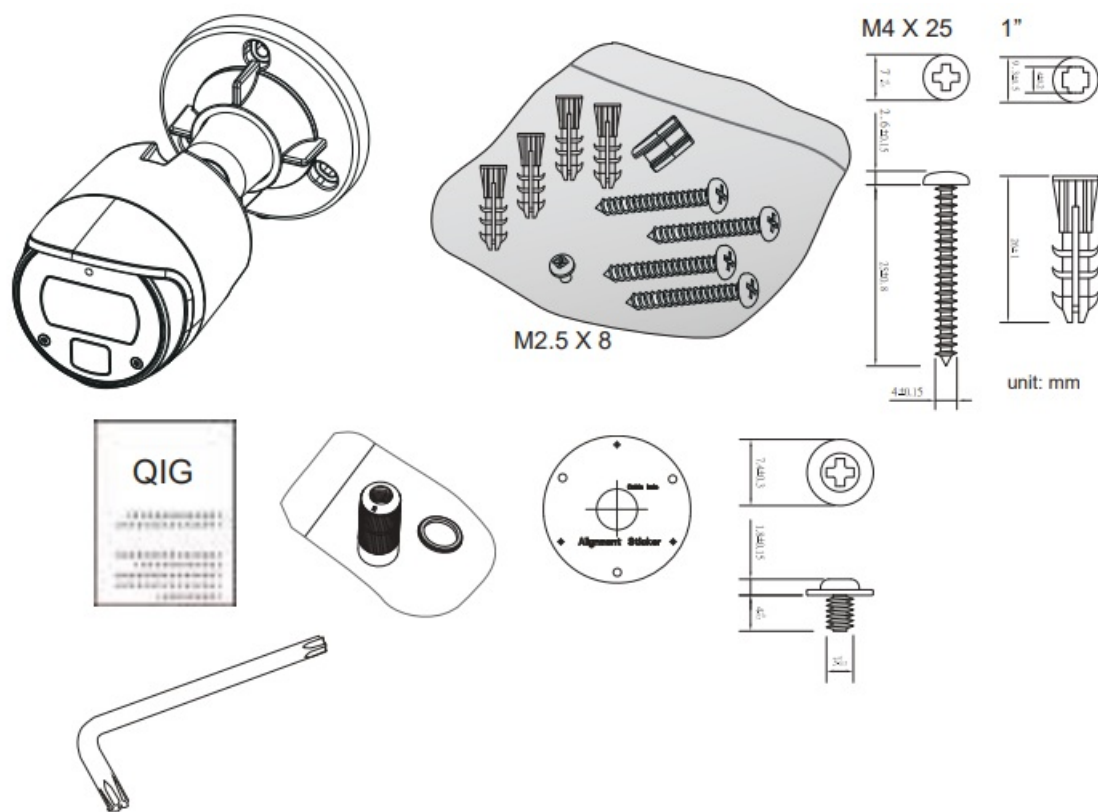


## Product Information

The IB639 Series is a network camera designed for surveillance purposes. It must be installed and protected in a location that is not easily accessible and away from impacts or heavy vibration. It can be installed on a wall or at least 3 meters above the ground. The product should be used in compliance with local laws and regulations. It should be stored in a dry and well-ventilated environment.

## Package Contents

- M4 X 25 screws (1 package)
- VIVOTEK adapter (1 unit)
- LAN cable (1 unit)



## Usage Instructions

1. Choose a suitable location for installation, ensuring it is not easily accessible and away from impacts or heavy vibration.
2. If installing on a wall, make sure to use stable mounting brackets or surfaces.
3. Do not dismantle or perform maintenance on the camera while it is powered on.
4. For information on power adapters, please contact authorized VIVOTEK dealers.
5. Before installation, check the package contents to ensure all necessary components are present.
6. If using PoE connection, ensure the camera is connected to a PoE network without routing to outside plants.
7. For PoE connection, use only UL listed I.T.E. with PoE output.
8. If using a power adapter, make sure it is properly grounded.
9. Refer to the product manual for detailed instructions on connecting the camera to the network and configuring settings.

Note: The camera complies with part 15 of the FCC Rules and must not cause harmful interference. It is made in Taiwan and consumes power according to the specifications provided.

## Warning Before Installation

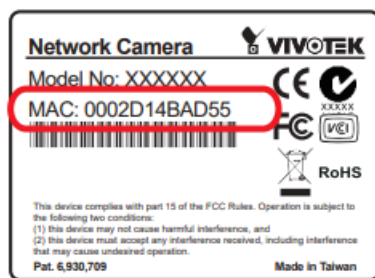
The product must be installed and protected in a location that is not easily accessible, and is away from impacts or heavy vibration. For example, at the location where the surveillance cameras are looking down or installed at high positions such as on a wall, or at least 3 meters above the ground.

- The product should be used in compliance with local laws and regulations.
- Do not install the product on an unstable mount or surface.
- Do not disassemble the camera or perform maintenance task when power is connected.
- Before installation, the product should be stored in a dry and ventilated environment.

- Use only accessories that comply with the technical specifications of the product.
- Please contact VIVOTEK's certified dealers for power adapters.

## Hardware Installation

1

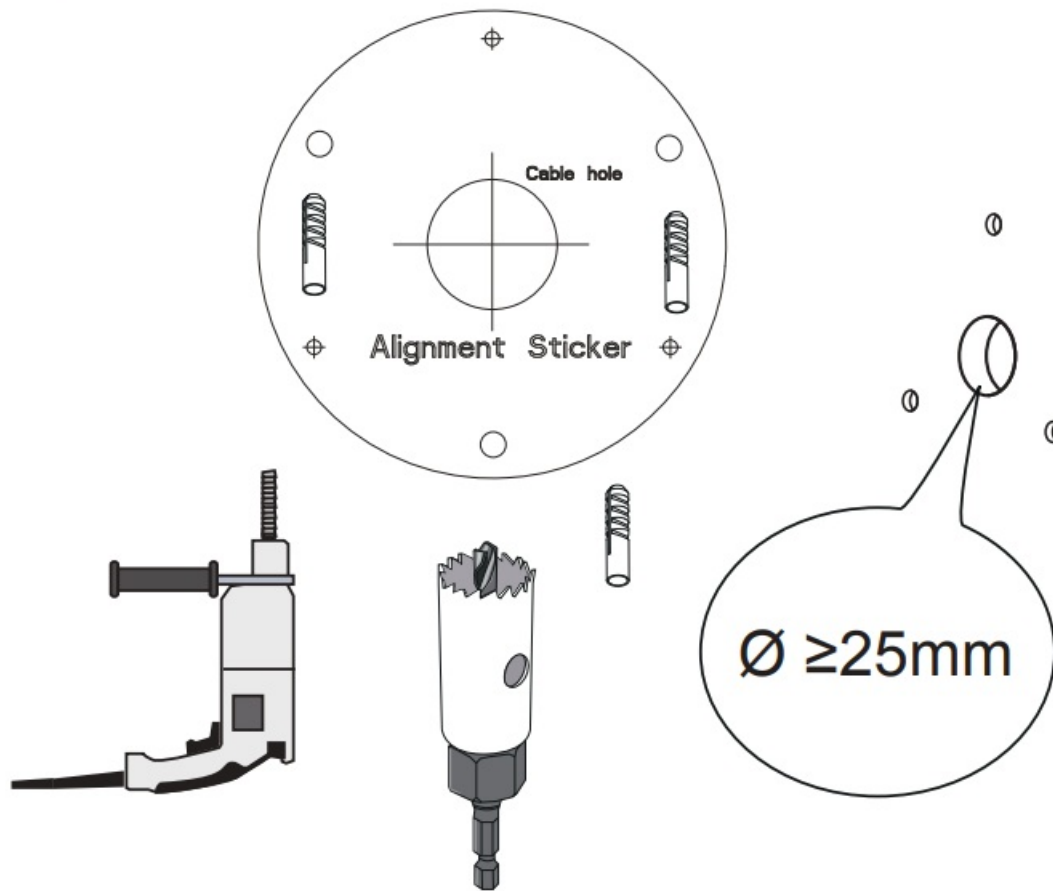


Consumption & Power Input
PoE 802.3af class 0 – 6W; 37V(0.16A)-57V(0.11A)
DC12V – 5.1W; DC12V(0.43A)

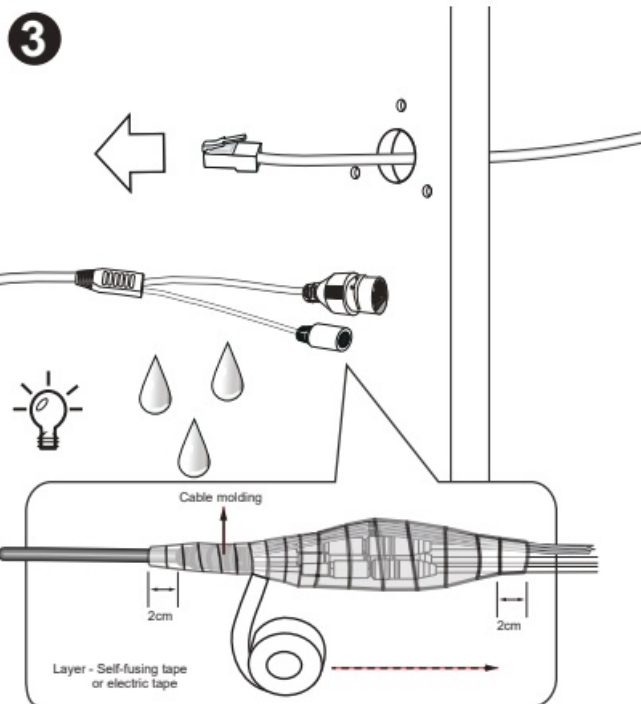
### NOTE:

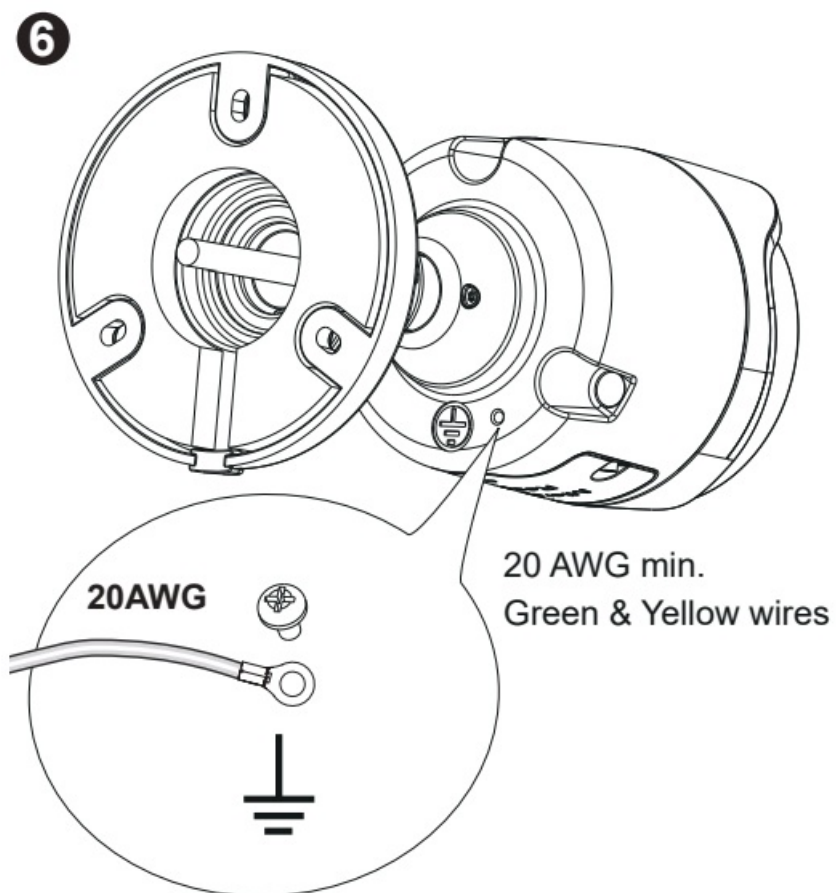
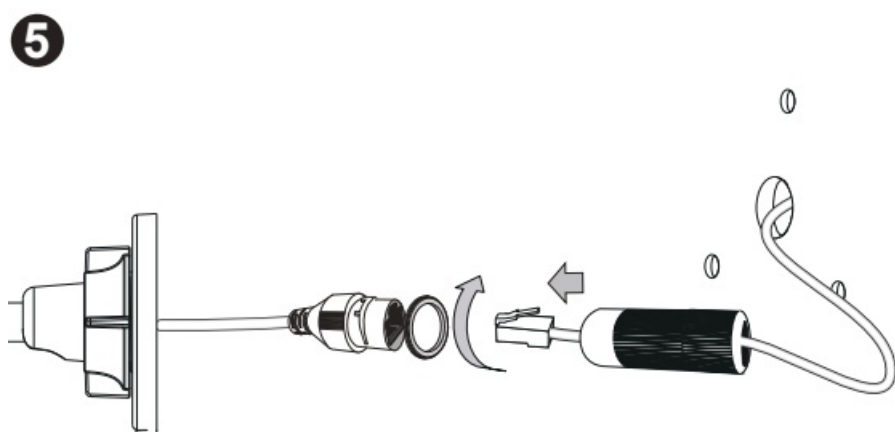
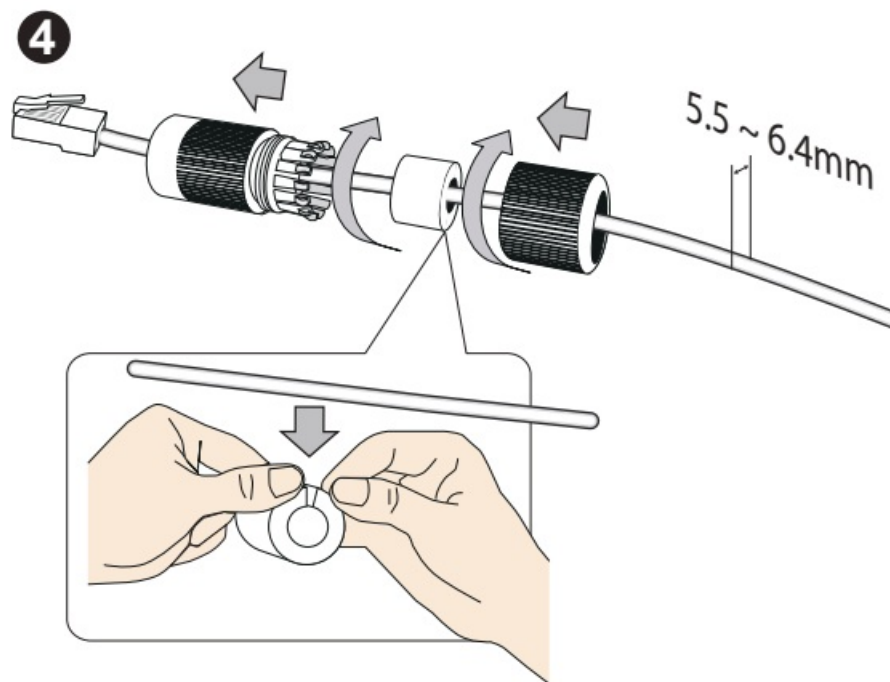
- The camera is only to be connected to PoE networks without routing to outside plants.
- For PoE connection, use only UL listed I.T.E. with PoE output.
- If powered by a power adapter, the adapter should be properly grounded.

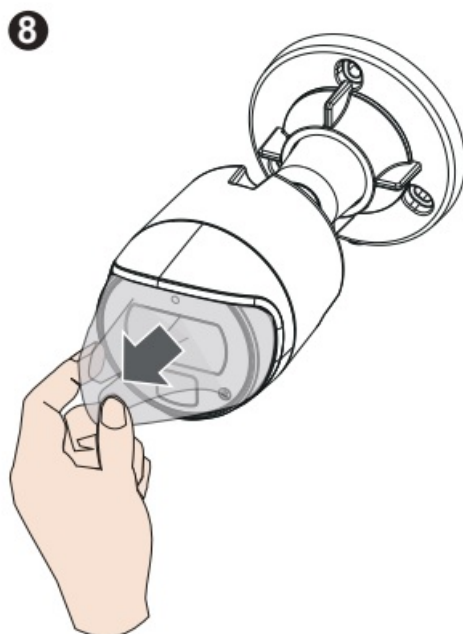
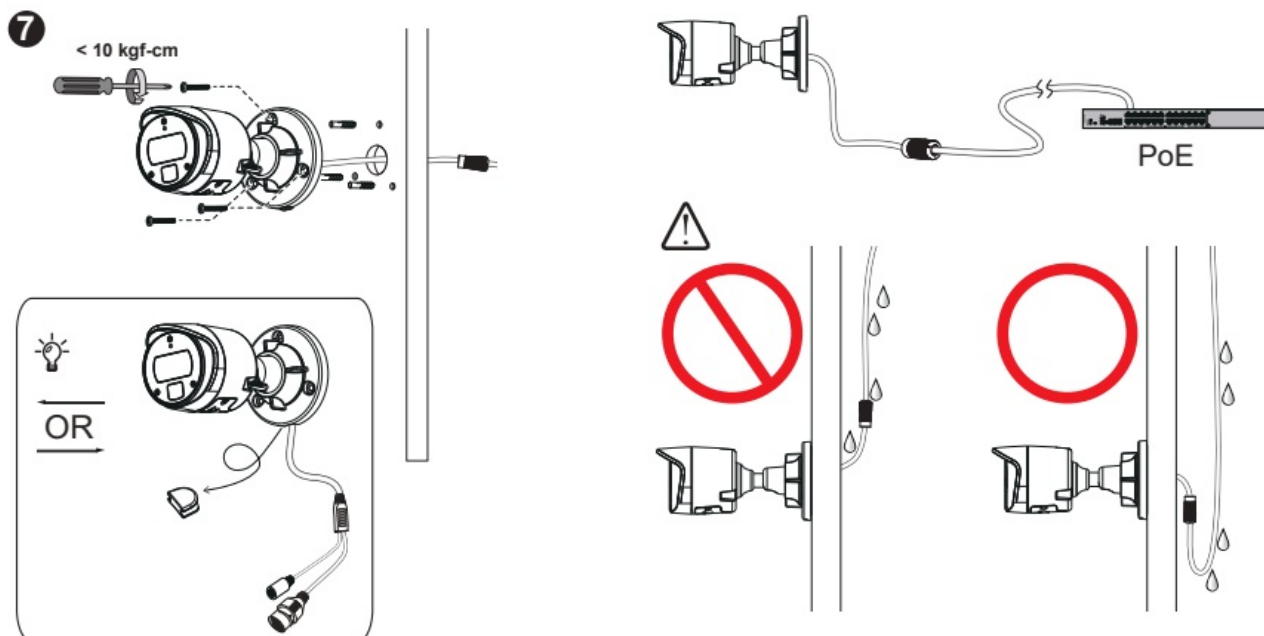
2



1. Stretch the waterproof tape by twice its length and wind around the cables.
2. The tape should overlap the cable joints by 20mm.
3. All connectors, whether they are used or not, should be waterproof.







Scan the QR code below to download the Vortex app.

**9** Scan the QR code below to download the Vortex app.

iOS QR code

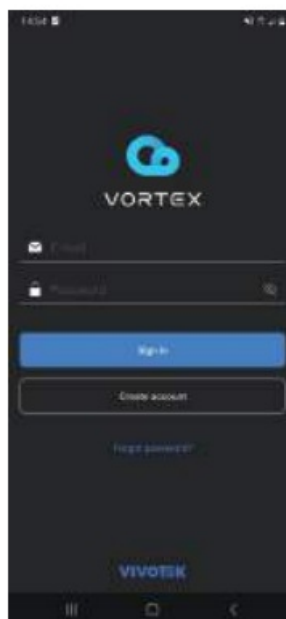


Android QR code



Create a Vortex account.

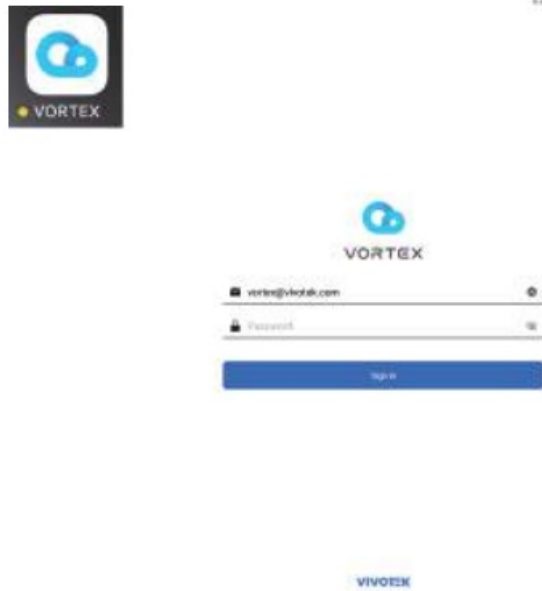
**10** Create a Vortex account.



or Log in to Vortex app.



**11** Log in to Vortex app.



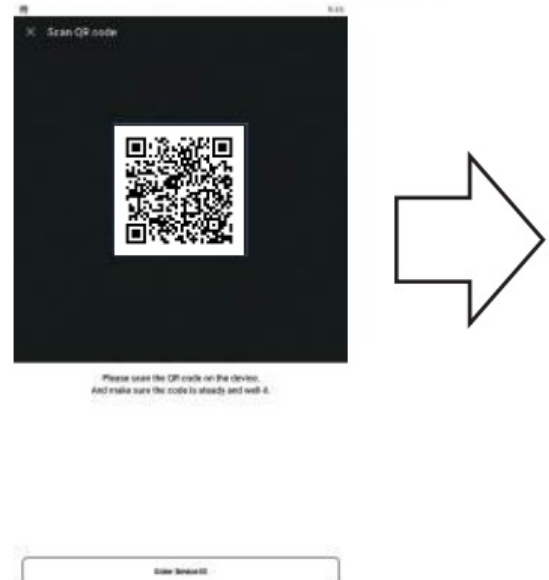
Add your camera.

Scan the QR code on the box or on the camera.

**12** Add your camera.



**13** Scan the QR code on the box or on the camera.



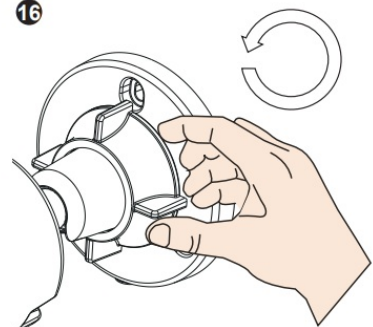
Scan success.

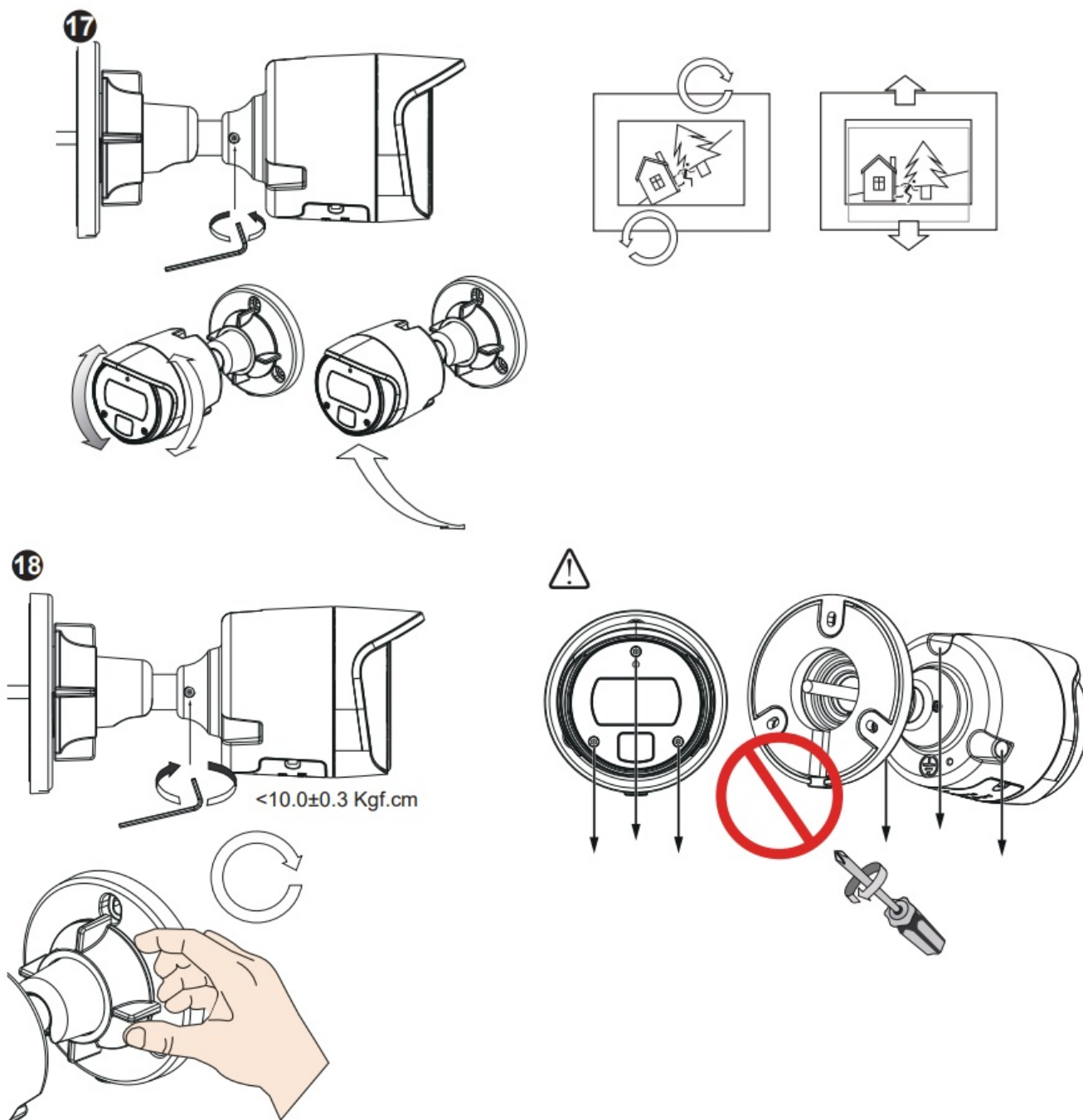


**15** Scan success.



**16**





Please contact authorized distributors for warranty and RMA service. Visit <https://www.vivotek.com/support/warranty-rma>

All specifications are subject to change without notice. Copyright © 2022 VIVOTEK INC. All rights reserved.

#### VIVOTEK INC.

- 6F, No.192, Lien-Cheng Rd., Chung-Ho, New Taipei City, 235, Taiwan, R.O.C.
- T: +886-2-82455282
- F: +886-2-82455532
- E: [sales@vivotek.com](mailto:sales@vivotek.com)

#### VIVOTEK USA, INC.


- 2050 Ringwood Avenue, San Jose, CA 95131

- T: 408-773-8686
- F: 408-773-8298
- E: [salesusa@vivotek.com](mailto:salesusa@vivotek.com)

## VIVOTEK Europe

- Zandsteen 15, 2132 MZ Hoofddorp Delta Electronics
- T: +31 (0)20 800 3817
- E: [saleseurope@vivotek.com](mailto:saleseurope@vivotek.com)

## Documents / Resources

	<p><a href="#">VIVOTEK IB639 Essential Bullet IP Camara</a> [pdf] Installation Guide  IB639, IB639 Essential Bullet IP Camara, Essential Bullet IP Camara, Bullet IP Camara, IP Camara, Camara</p>
---	--

## References

- [Kgf.cm](#)
- [V :: VIVOTEK ::](#)